



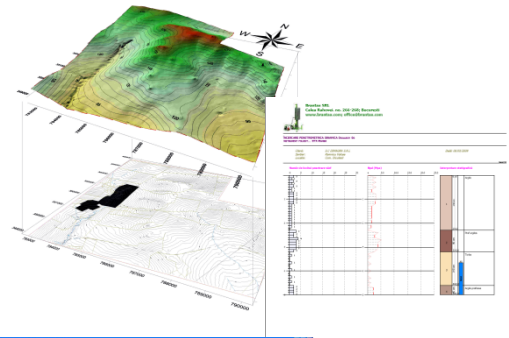
Dezvoltare parcuri eoliene

Din experienta acumulata pe diferite situri eoliene stim ca in etapele dezvoltarii unor astfel de proiecte sunt necesare: masuratori topografice, studii geotehnice, investigatii geofizice. Noi realizam toate aceste servicii si va putem oferim cele mai avantajoase conditii.



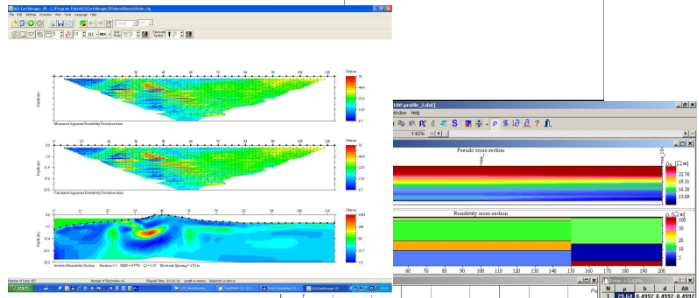
Masuratori topografice:

- vectorizare harti si planuri topografice
- modelare 3D suprafete extinse
- masuratori GPS
- planuri de situatie complexe
- trasare drumuri de acces
- trasare si verificare virole
- trasare si verticalizare stalpi



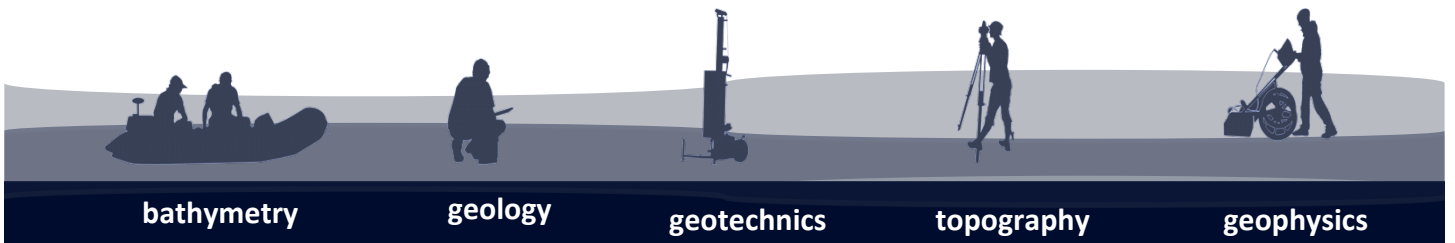
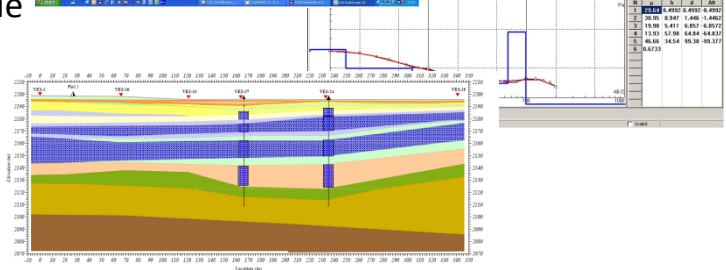
Studii geotehnice:

- foraje geotehnice
- teste de penetrare dinamica
- teste cu placa
- prelevare de probe
- analize de laborator
- intocmire si avizare documentatie



Investigatii geofizice:

- Sondaje Electrice Verticale (SEV)
- profile geoelectrice 2D
- harti geoelectrice 2D si 3D
- masuratori de gradient magnetic



bathymetry

geology

geotechnics

topography

geophysics